



Blackbird Creek, ID

Volcanogenic Massive Sulfide – Cobalt, Copper and Gold

2021-02-11

Summary

DGRM

- DG Resource Management Ltd. (DGRM) is a Canadian based, private, project generator.
- Management at DGRM have a successful **track record of exploration discovery across multiple commodities:** Uranium, REE's and Rare Metals, Specialty Metals, Industrial Commodities, Gold.
- **DGRM holds 100% interest in the Blackbird Creek, ID Project**

Property

Ludwig (Co, Cu, Au)

- Historical 250,000 tons at 0.4% to 0.6% Co
- Two additional ore grade (>0.6% Co) breccias intersected by drilling, not included in resource
- Large Co/Cu soil anomaly. Untested.

Patty B (Co, Cu, Au)

- Historical 83,333 tons @0.72% Co
- Located 1.2 km east of Ludwig along a continuous Co/Cu soil anomaly

Opportunity

- The property is road accessible and consists of 158 claims totaling 1285 Ha (3175 ac). It covers the **Ludwig, Patty B, Anderson, Edith B, Copper Hill, Slippery Gulch, Raven and Ascent Prospects**
- Along trend of the historical Co, Cu **Blackbird Mine** and Jervois Mining's **RAM Deposit**
- Recent (2016 - 2018) exploration including an Airborne Geophysical Survey, property wide **prospecting and soil and mag survey**



Idaho USA

The Blackbird Creek Property is located within Lemhi County, Idaho

- The 2019 Frasier institutes Annual Survey of Mining Companies ranked **Idaho in 8th place worldwide** on the investment attractiveness index
- Financings for Idaho or Idaho related exploration companies during the last half of 2019 exceeded \$70 million
- Idaho has a long history of mining for phosphate, silver, gold, lead, zinc and other commodities
- **Idaho contains the largest unmined Primary Cobalt Deposits in the USA, with the Blackbird Cobalt Mine having produced a significant proportion of its Cobalt from 1902 to 1968**



Lemhi County Idaho

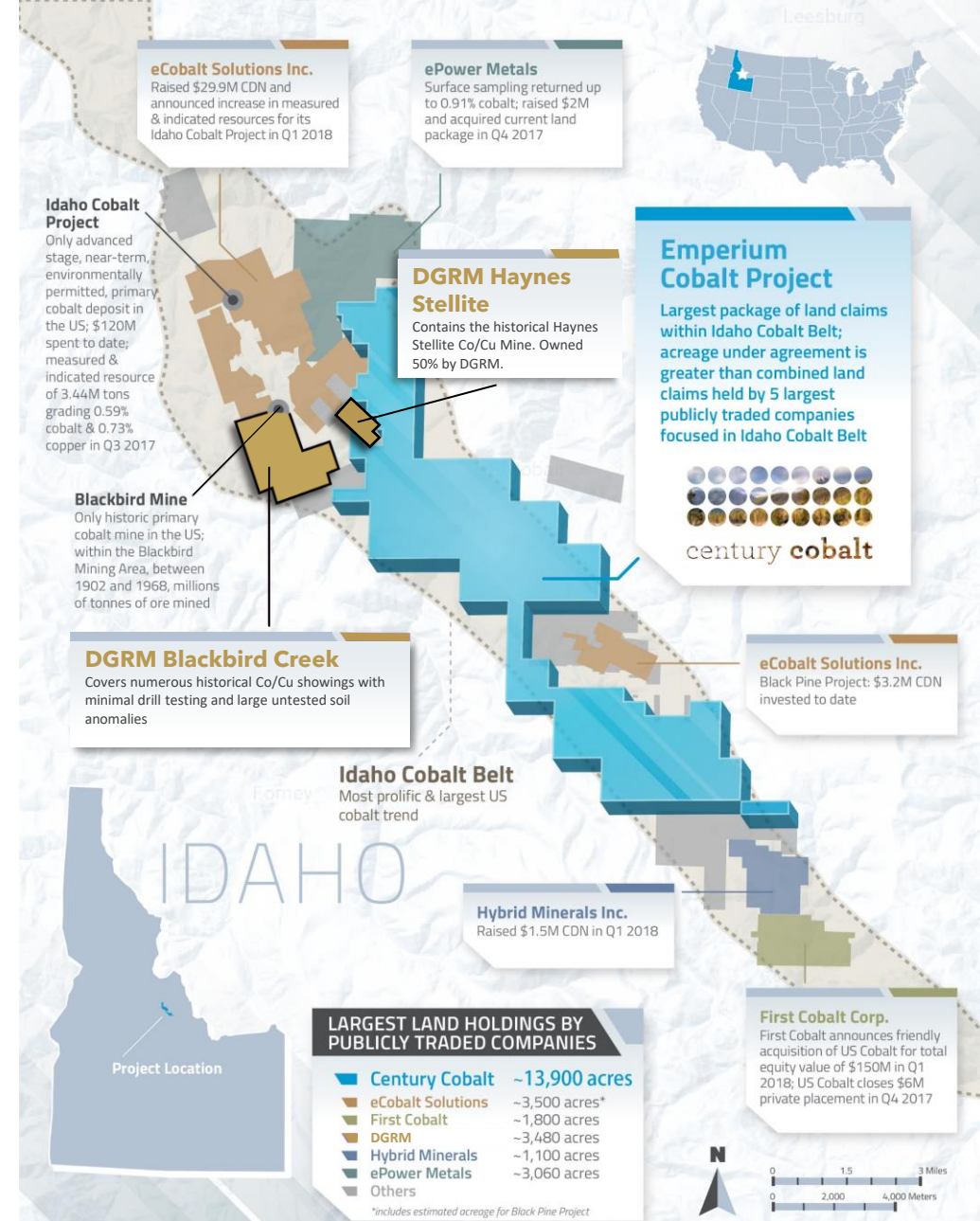


- The Blackbird Creek Project is approximately 34 km west of Salmon, ID along a well-maintained gravel road
- It is within a major metallogenic province known as the Idaho Cobalt Belt; with a long history of cobalt, copper and gold production
- Lemhi County is host to numerous base and precious metal deposits within close proximity to the project, including:
 - First Cobalt's Iron Creek Project (Cu, Co)
 - Jervis Mining's Idaho Cobalt Operations (Co, Au)
 - Technology Minerals Empirium Cobalt Project (Co, Cu, Au)

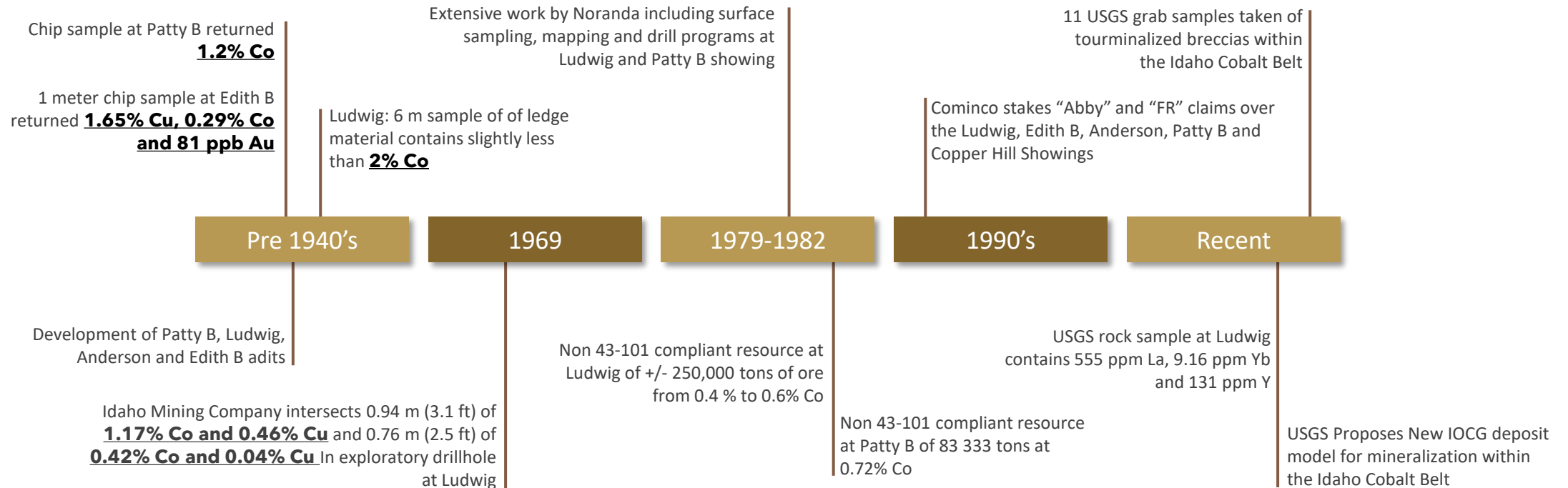
Idaho Cobalt Belt

The Blackbird Creek Property is located within the Idaho Cobalt Belt

- The Idaho Cobalt Belt is a unique example of sea-floor hydrothermal brines that vented along an ancient rift.
- It is a northwest-trending zone of Co-Cu-Au occurrences approximately 64 km and 10 km wide.
- Numerous advanced Projects exists which generally target Co-Cu-Au rich tourmaline breccias such as:
 - Blackbird Mine (Inactive Noranda)
 - Jervois Mining Idaho Cobalt Operations
 - First Cobalt Iron Creek Project



Property History



Historical Highlights

6 m sample of ledge material outside of adit (1913)

- Comp Sample: **Slightly less than 2% Co**

One hole test drill program (1969)

- Drill Hole: **0.94 m of 1.17% Co and 0.46% Cu**
- Drill Hole: **0.76 m of 0.42% Co and 0.04% Cu**

9-hole diamond drill program defines historical resources (1980s)

- Resource: **250,000 tons @ 0.4% - 0.6% Co**

USGS Rock Sample (2006)

- Grab Sample: **555 ppm La, 9.16 ppm Yb and 131 ppm Y**

G.J. Hughes Jr. (pre-1940's)

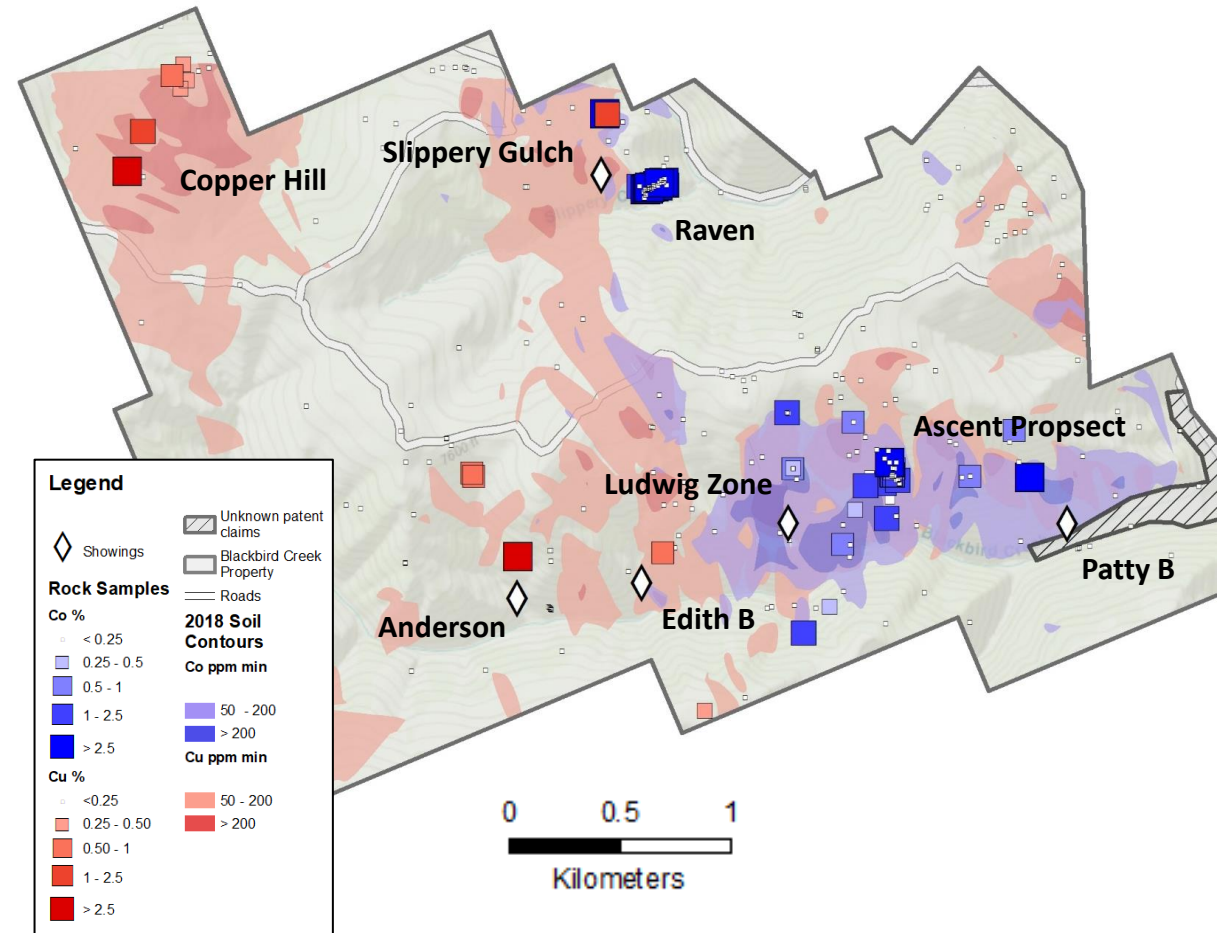
- Chip Sample: **1.2% Co across adit**

17-hole diamond drill program defines historical resources

- Drill Hole: **3.35 m of 1.2% Co**
- Drill Hole: **2.44 m of 0.84% Co**
- Drill Hole: **4.27 m of 0.51% Co**
- Resource: **83,333 @ 0.72% Co**

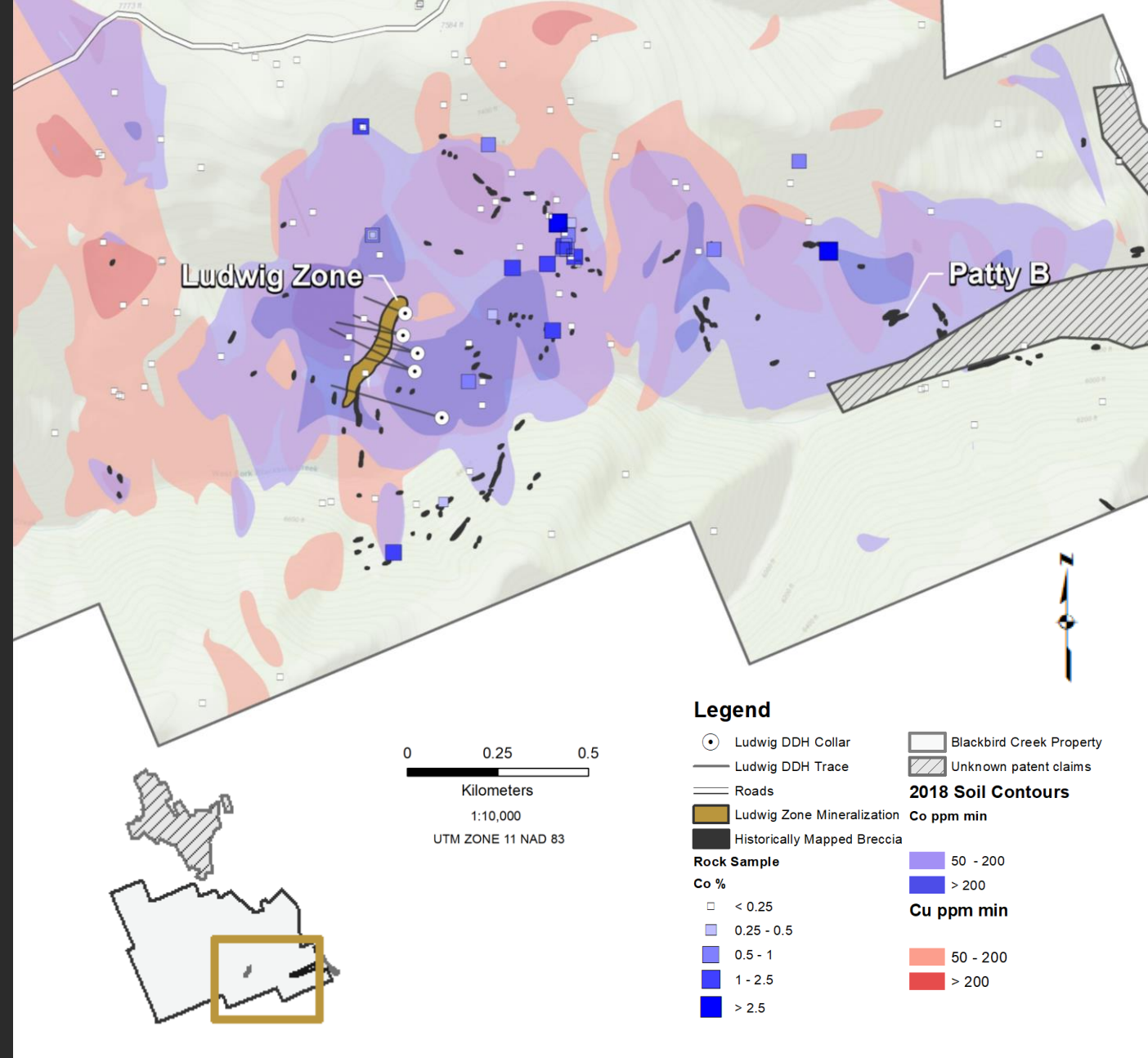
Ludwig Zone

Patty B Showing



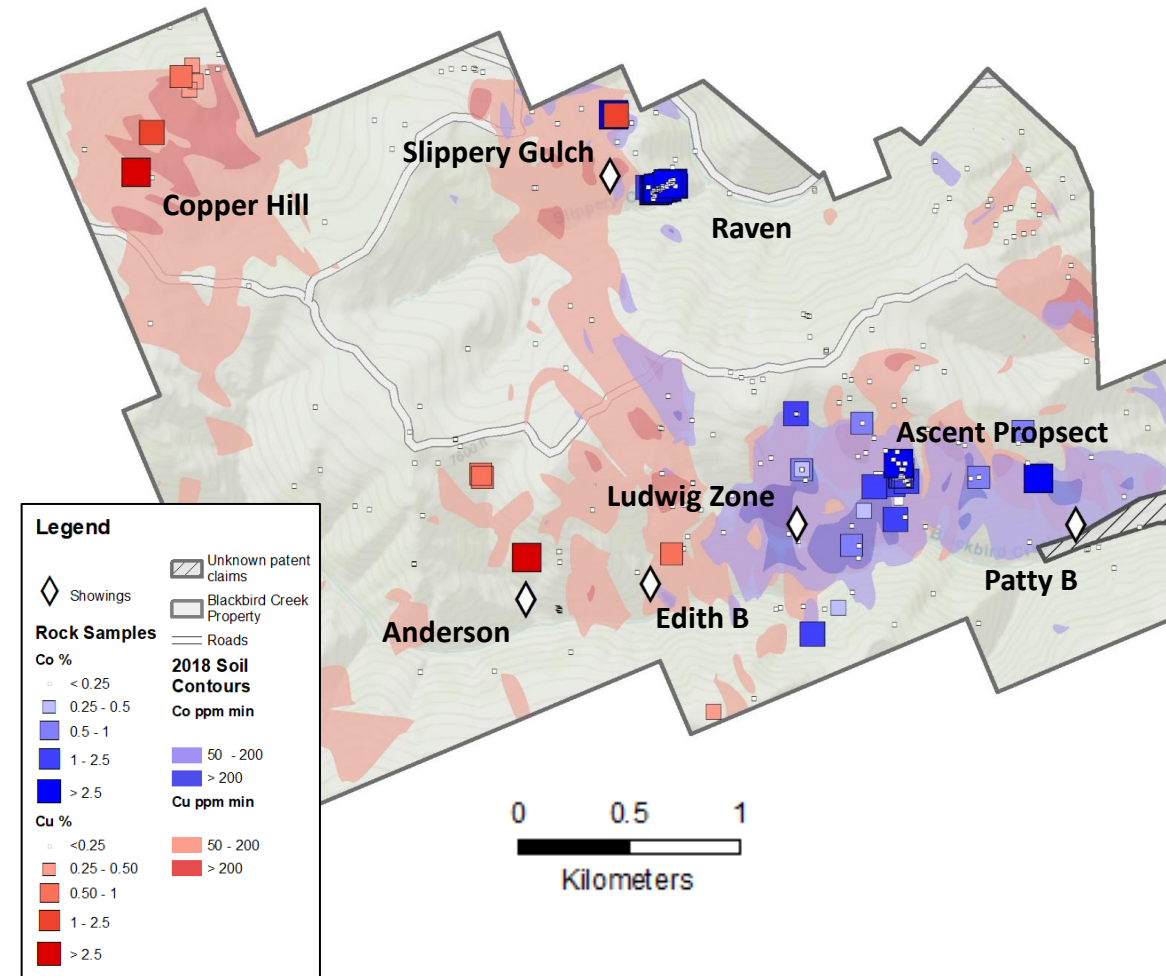
Historical Drilling

- September 1969, the Idaho Mining Company (Ludwig Zone)
 - 0.94 m (3.1 ft) of 1.17% Co and 0.46% Cu from 10.06 m (33 ft) – 11.00 m (36.1 ft)
 - 0.76 m (2.5 ft) of 0.42% Co and 0.04% Cu from 79.71 m (261.5 ft) – 80.47 m (264 ft)
- 1979 Noranda Ludwig Deposit 9-hole diamond drill program:
 - Historical resource: 250,000 tons @ 0.4% to 0.6% Co
 - Intersected two additions breccia containing ore- grade cobalt (> 0.6% Co)
- 1979 Noranda Patty B 17-hole diamond drill program:
 - Historical resource: 83,333 tons @ 0.72% Co
 - Breccia intercepts in additional holes suggest possibility of another tabular breccia body



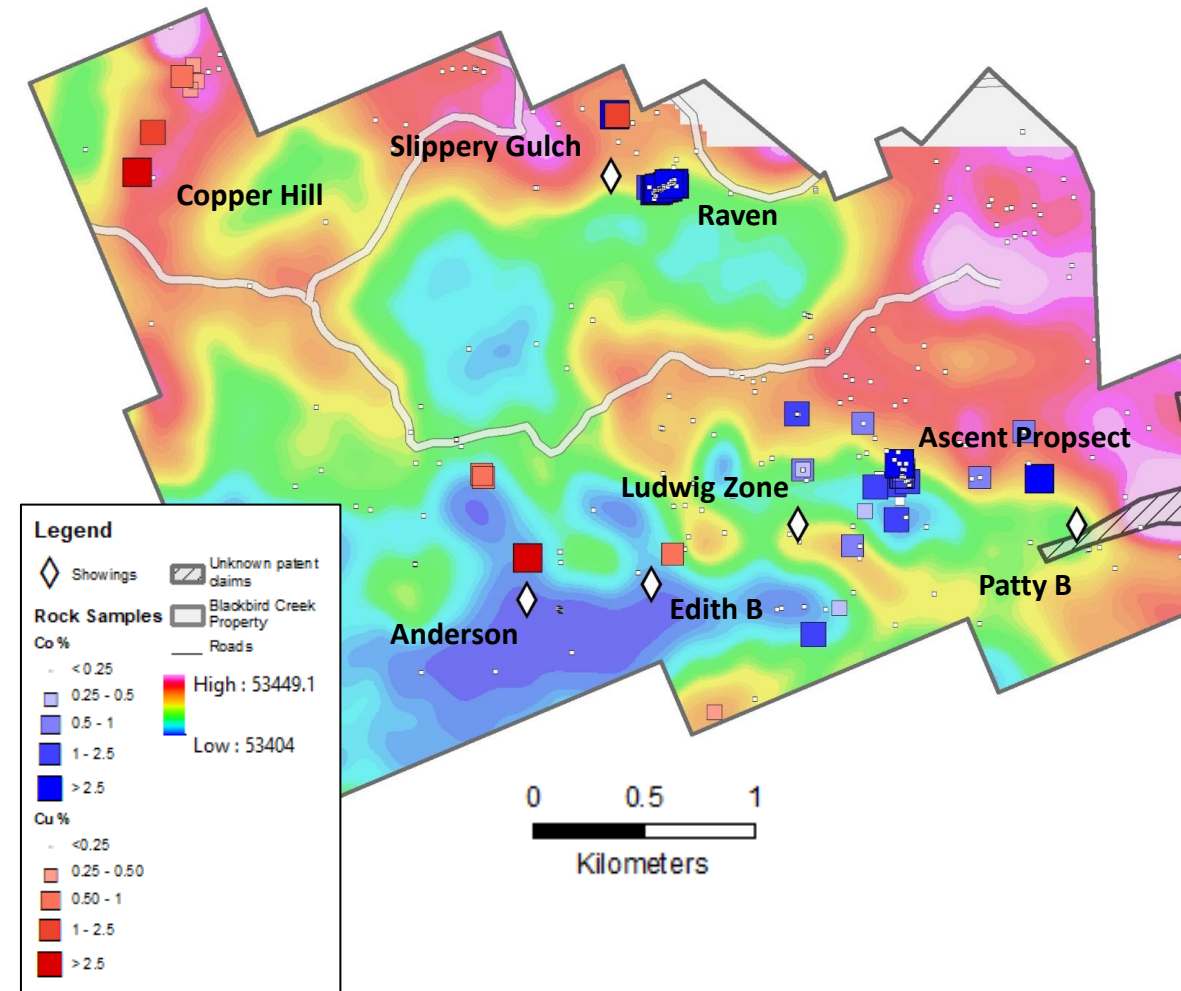
Recent Exploration

- During 2018 program 2,015 soil samples and 293 rock samples were collected throughout the entire claim block
- Several new prospects were located along with confirmation of historically noted mineralized areas. These prospects include:
 - **Raven Prospect**
 - Mineralized samples within scree slope (15 x 100 m)
 - Average grade of all samples collected was **2.74% Co**, **0.69 g/t Au**, and **1.75% TREO**.
 - **Ascent Prospect**
 - Analogous to Raven, the Ascent is located within a scree slope approximately 500 meters long
 - High grade samples up to **3.62% Co** and **1.73 g/t Au**
 - **Slippery Gulch Prospect**
 - Large Cu/Co soil anomaly with many cobaltite rich boulders, source unknown
 - Boulder samples to **5.19 % Co**, **0.20% Cu** and **3.24 g/t Au**



Recent Exploration

- **Copper Hill**
 - Large 1200 x 800 m copper in soil anomaly with numerous trenches/cuts
 - Grab samples up to **3.25% Cu**
- **Anderson**
 - Samples collected from the located adits and prospect pits displayed anomalous copper and gold mineralization
- **Ludwig Prospect**
 - Associated with large Co/Cu soil anomaly which trends east to the Patty B and Ascent prospects as well as a north trending Cu anomaly which continues to slippery gulch
 - Channel sample collected within historical adit:
9 m @ 0.274% Co and 0.06 g/t Au, with the highest grade of 0.857% Co and 0.182 g/t Au

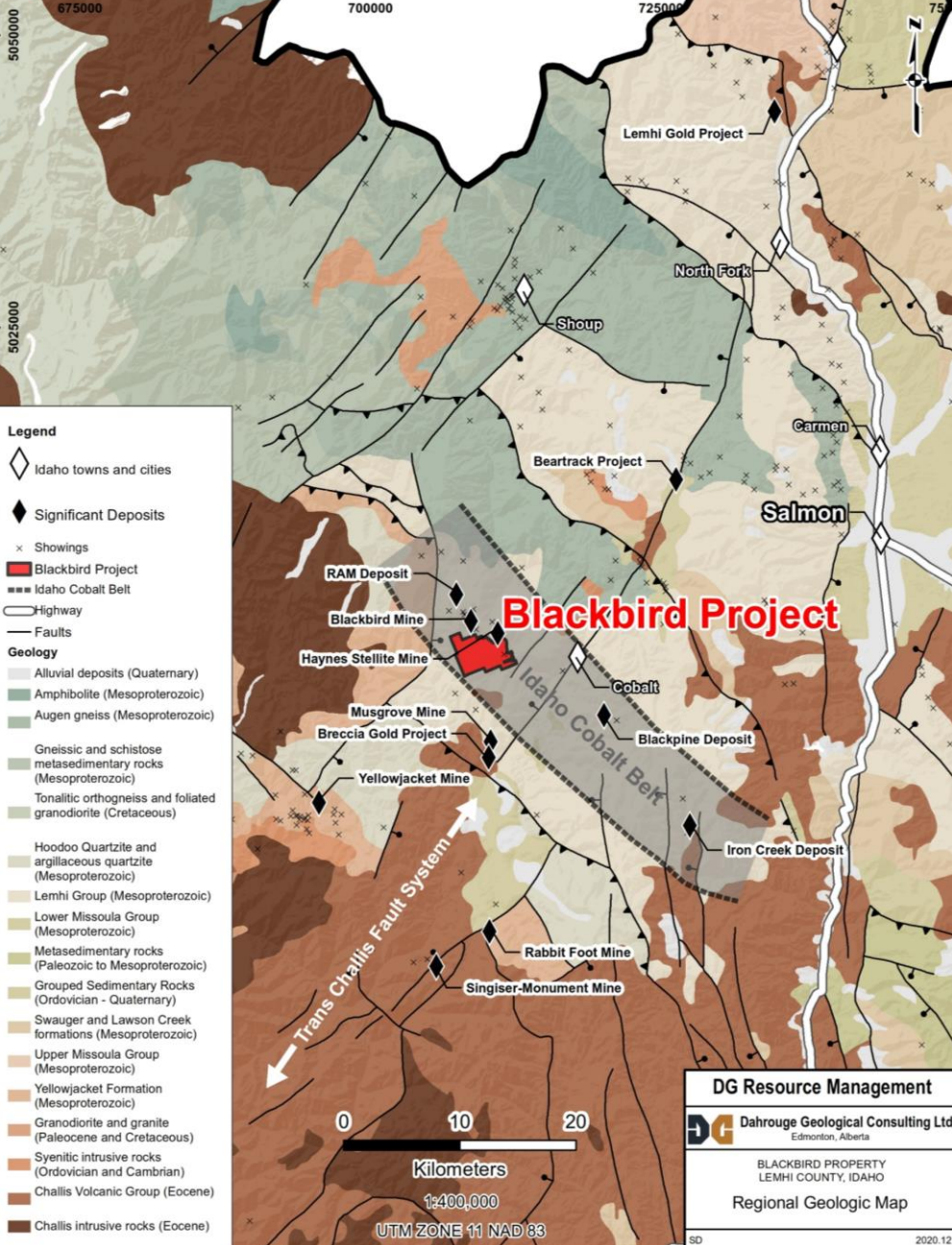


Geology & Mineralization

Several significant cobalt-copper prospects and deposits within the Idaho Cobalt Belt are typically associated with two or more distinctive, regional stratigraphic horizons within the Apple Creek Formation

Three types of Co-Cu-Au occurrences are noted (Nash, 1989, reported in Pegg, 1997):

- **Type 1:** Cobalt-copper-arsenic rich deposits of the Blackbird Mine type. Generally contain approximately equal amounts of cobalt and copper, with varying amounts of gold. Dominant minerals include cobaltite and chalcopyrite. Syngenetic and stratabound mineralization associated with mafic sequences of the Apple Creek Fm, deposits are typically in tabular form.
- **Type 2:** Cobaltiferous-pyrite-magnetite deposits with variable chalcopyrite and low arsenic content. These occurrences are typically hosted by fine-grained metasediments from the lower unit of the Apple Creek Fm. Mineralization is stratabound with localized striform and found within syn-sedimentary soft sediment structures.
- **Type 3:** Cobaltiferous, tourmaline-cemented breccias. These breccias are common in the lower unit of the Apple Creek Fm. Most notably, near the Ludwig prospect located on the Blackbird Creek Property.



Resource Management

Suite 103, 10183 – 112 Street
 Edmonton, AB T5K 1M1
 Tel: 780-434-9808

www.dgrm.co

Jody Dahrouge
 Email: jody@dahrouge.com

