



Resource Management

Gold Mountain Project, BC

January 16, 2020

Summary

DGRM

- Canadian based, private, project generator.
- Successful management with a track record of exploration discoveries.
- Holds 100% interest in the Gold Mountain Project, BC.

Gold Mountain

- Up to seven discontinuous quartz veins along two parallel shear zones, containing up to **1388 oz/ton Ag and 68 g/t Au.**
- Historic data suggests 500 – 600 m strike with possibility of expansion, widths to several meters.
- Multiple veins / structures?

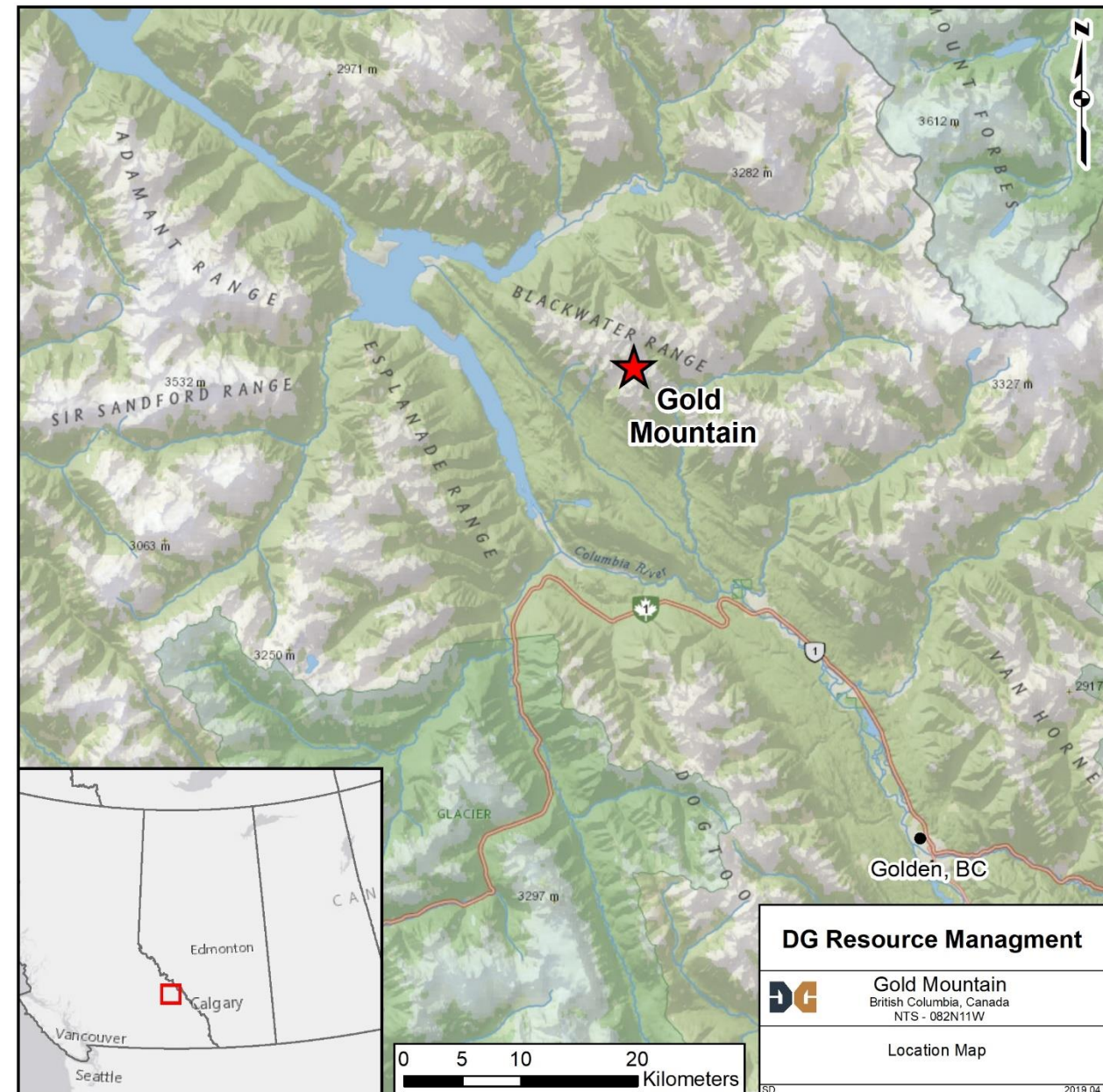
Strategy

- Locate and sample historic gold-silver showings.
- Prospect for and identify new exploration targets.
- Determine nature of mineralization and relation to alkaline intrusions in region.
- Confirm historic results through small two- to four-hole drill program.



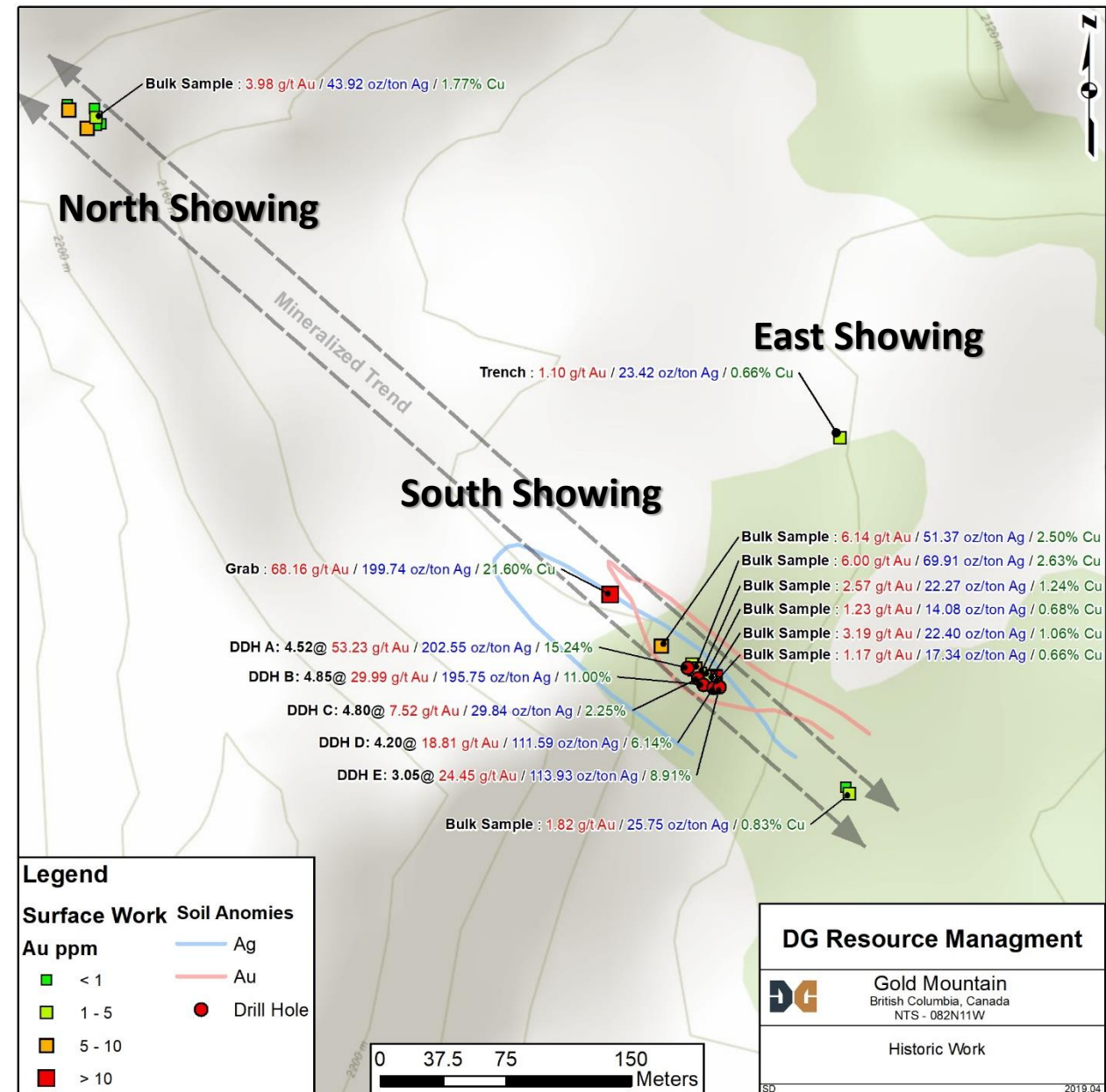
Gold Mountain - Location

- The Gold Mountain Property is an early stage gold/silver property located approximately 50 km NW of Golden, BC, just north of Highway 1.
- Acquired in 2018, the property is comprised of two mineral claims over 801.6 ha.
- The property encompasses the historic Grizzly occurrence where gold and silver is hosted within polymetallic quartz / carbonate veins.
- Access is by helicopter from Golden, BC.



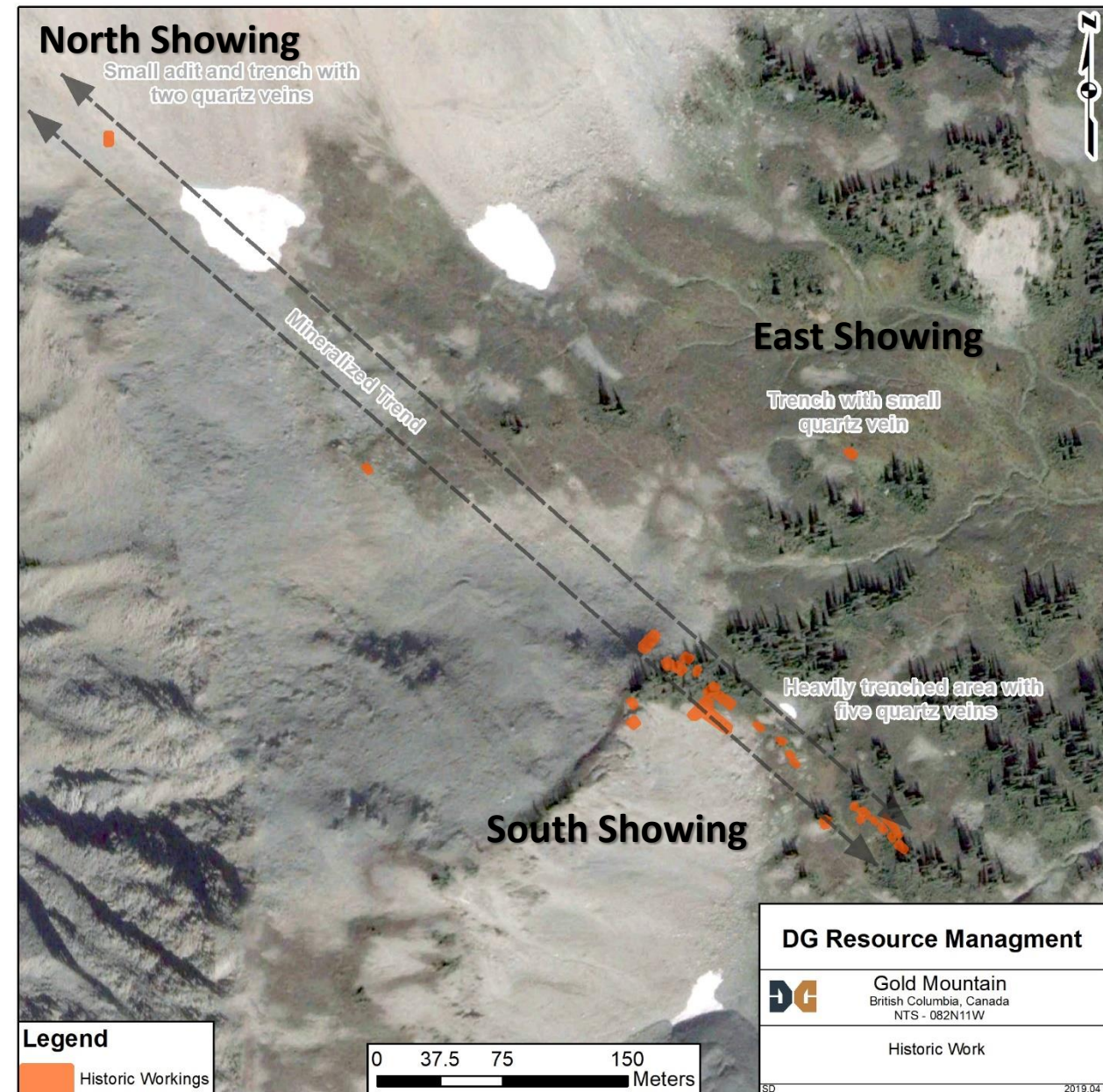
Gold Mountain - History

- 1930's: one adit - two small open cuts represent the earliest known work.
- 1981 (Empey and Richardson, 1981): grab samples of quartz veins contained up to **0.27 g/t Au** and **268.8 g/t Ag**.
- 1982 (Allen, 1982): 14+ trenches uncovered two veins at the North Showing, where a 1 meter-thick quartz vein in two trenches returned **4.87 g/t Au, 646.9 g/t Ag and 1.89% Cu** and **3.50 g/t Au, 5826.3 g/t Ag and 73.31 % Pb**. At the South Showing five veins exposed in several trenches returned up to **30.3 g/t Au, 12,123.1 g/t Ag and 32.54% Cu**.
- 1983 (Parr, 1983): two bulk samples confirmed the 1982 results with a 590 lb sample averaging **2.33 g/t Au, 703.4 g/t Ag and 1.04% Cu**. In addition, 71 samples of vein material averaged **2.78 g/t Au, 885.3 g/t Ag and 1.23%**.
- 1984 (Parr, 1984): 8 shallow drill holes with highlights of
 - 4.04 m - 59.04 g/t Au, 6863.1 g/t Ag, 16.9 % Cu and 8.95 % Pb**
 - 4.50 m - 7.89 g/t Au, 942.2 g/t Ag, 2.3% Cu and 5.26% Pb.**
- 1988 (Gale, 1988) site visit was unable to confirm historic results, however, historic data is sourced from multiple companies over different years.



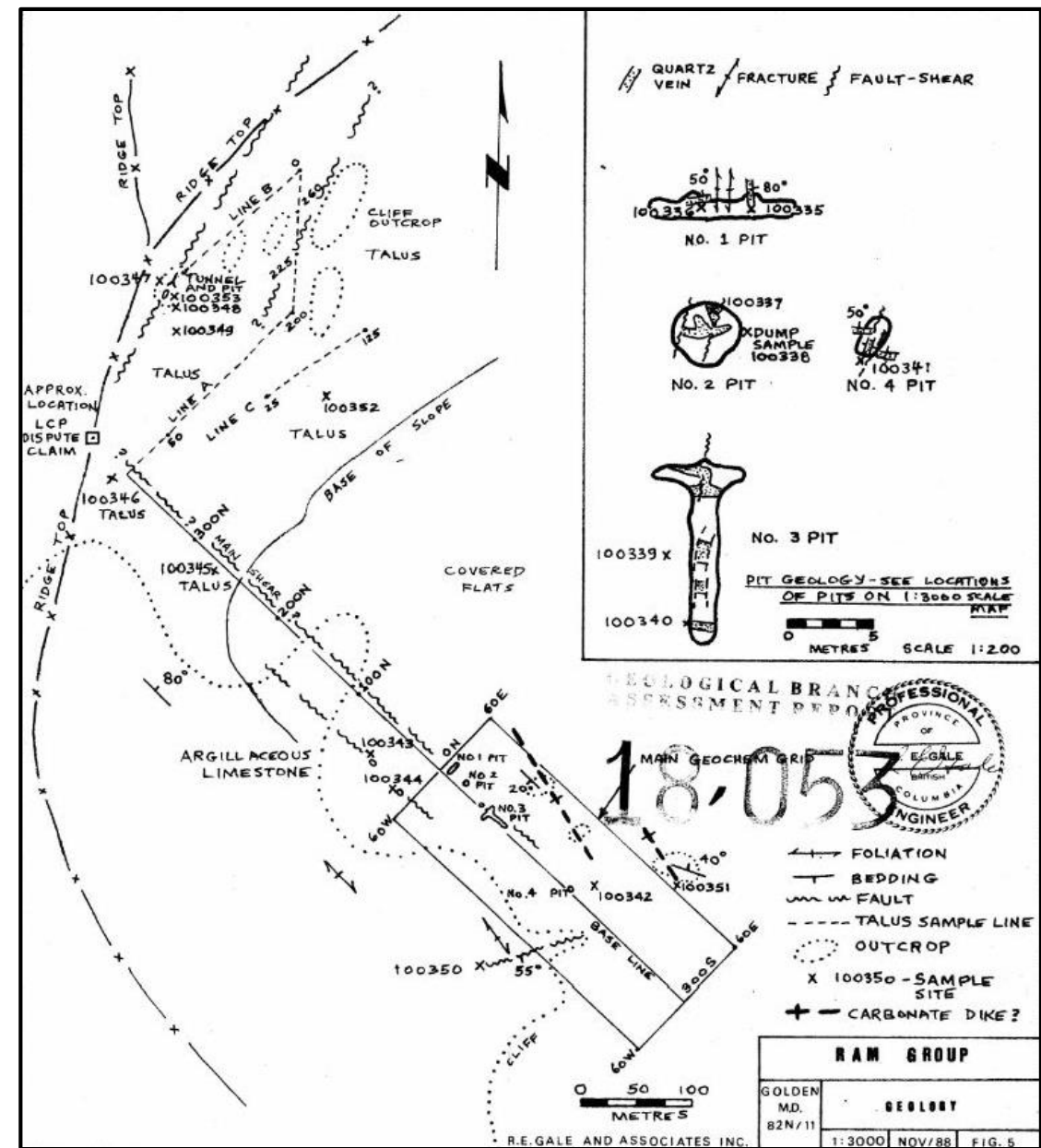
Gold Mountain – Zone Geometry

- Two main showings (North and South) are separated by about 450 m of talus. Mineralized boulders within the talus attest to the continuity of the zone(s).
- The mineralized trend is 500 m - 600 m long and open on both ends.
- Approximately 150 m NE of the main Gold Mountain trend, a third showing (the east showing) consists of narrow quartz veins exposed in a trench.
- The veins strike $\sim 130^\circ$ along a regional fold and appear to occupy a fault or fracture-cleavage. Cross veins are present.
- The South Showing encompasses five vein exposures in multiple trenches over an approximate 160 m by 50 m area.
- Two veins are presumed to continue to the North Showing and are exposed by a shallow open cut and small adit. These veins are up to 1 m thick in places.
- A conceptual exploration target with dimensions
 - 600 m x 4 m wide x 200 m vertical
 - With an assumed 2.7 SG
 - Would equate to 1.3 Mt**



Gold Mountain – Geology and Mineralization

- The area is underlain by grey, buff and black-banded Cambrian argillite, argillaceous limestone, limestone, dolomite and narrow bands of sheared mica schist.
- Bedding is near vertical and strikes northwesterly.
- Veins generally strike 130° following along a regional fold within a fault.
- Disseminations and lenses of tetrahedrite, galena, chalcopyrite and pyrite occur within the quartz carbonate veins.
- Gold values are reportedly associated with tetrahedrite and silver values with the galena. Tetrahedrite appear to be most common within quartz which may be later than the carbonate/galena.
- Little to no wall rock alteration has been noted.



DC Resource Management

Suite 103, 10183 – 112 Street
Edmonton, AB T5K 1M1
Tel: 780-434-9808

www.dgrm.co

Jody Dahrouge
Email: jody@dahrouge.com

