



DC Resource Management

Breccia Gold Project, Idaho

Redefining a Historic Resource

Summary

DGRM

- Canadian based, private, project generator
- Successful management with a track record of exploration discoveries
- Holds 100% interest in the Breccia Gold Project, Idaho

Breccia

- Au-Ag mineralization, well documented by historic and recent sampling (Historic Resource Estimate of 690 – 700,000 oz at 0.138 to 0.140 oz/t Au)
- Widespread and highly anomalous Au-Ag rock and soil geochemistry within an approximate 600 by 150 m area
- Potential to develop and advance to resource definition phase quickly and efficiently

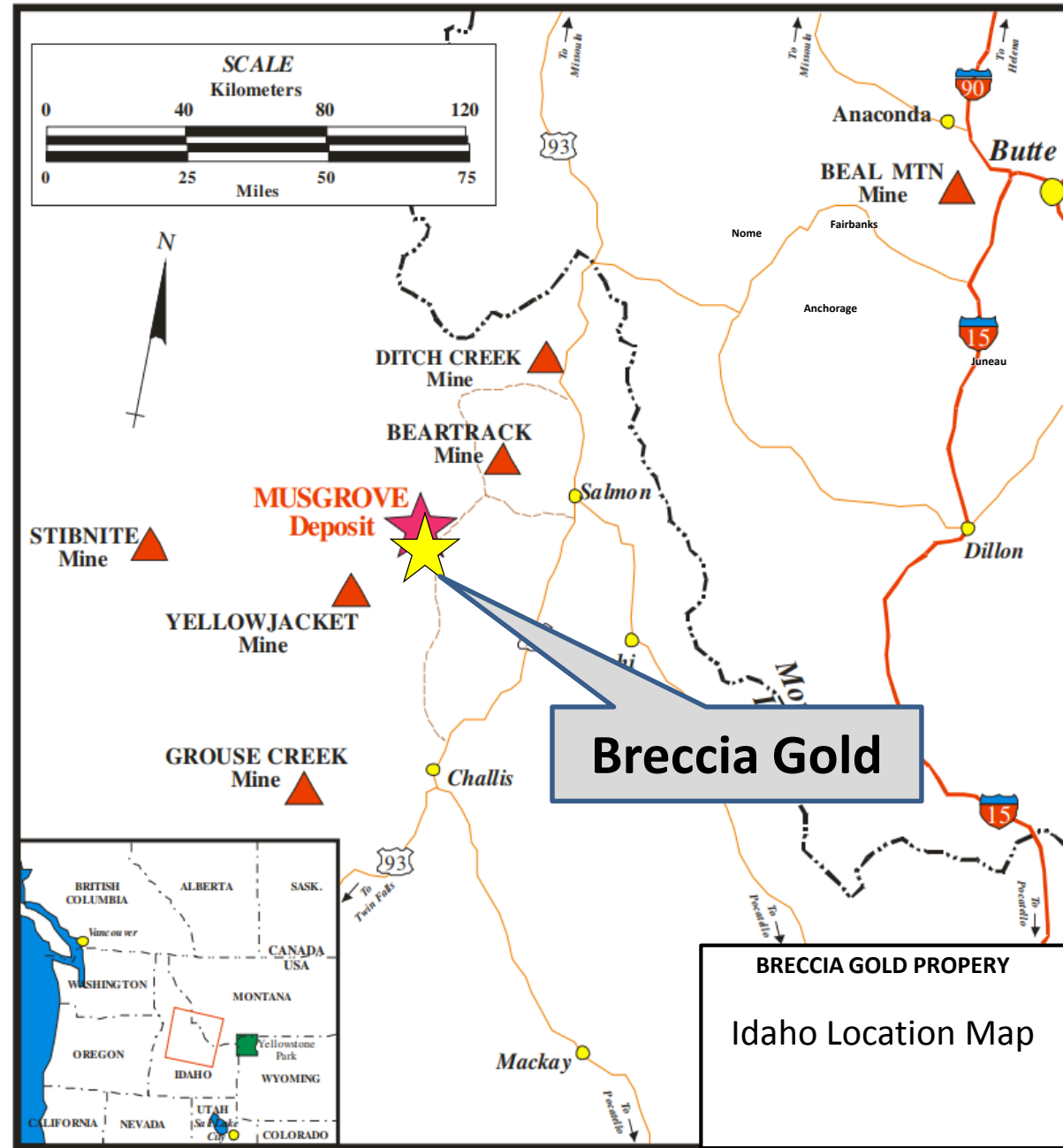
Strategy

- Complete NI 43-101 Technical Report (underway)
- Drill permitting for anticipated 2nd Quarter, 2020 start
- Phase 1 Drilling: reproduce historic results (1,000 m)
- Phase 2 Drilling: resource definition (5,000+ m)



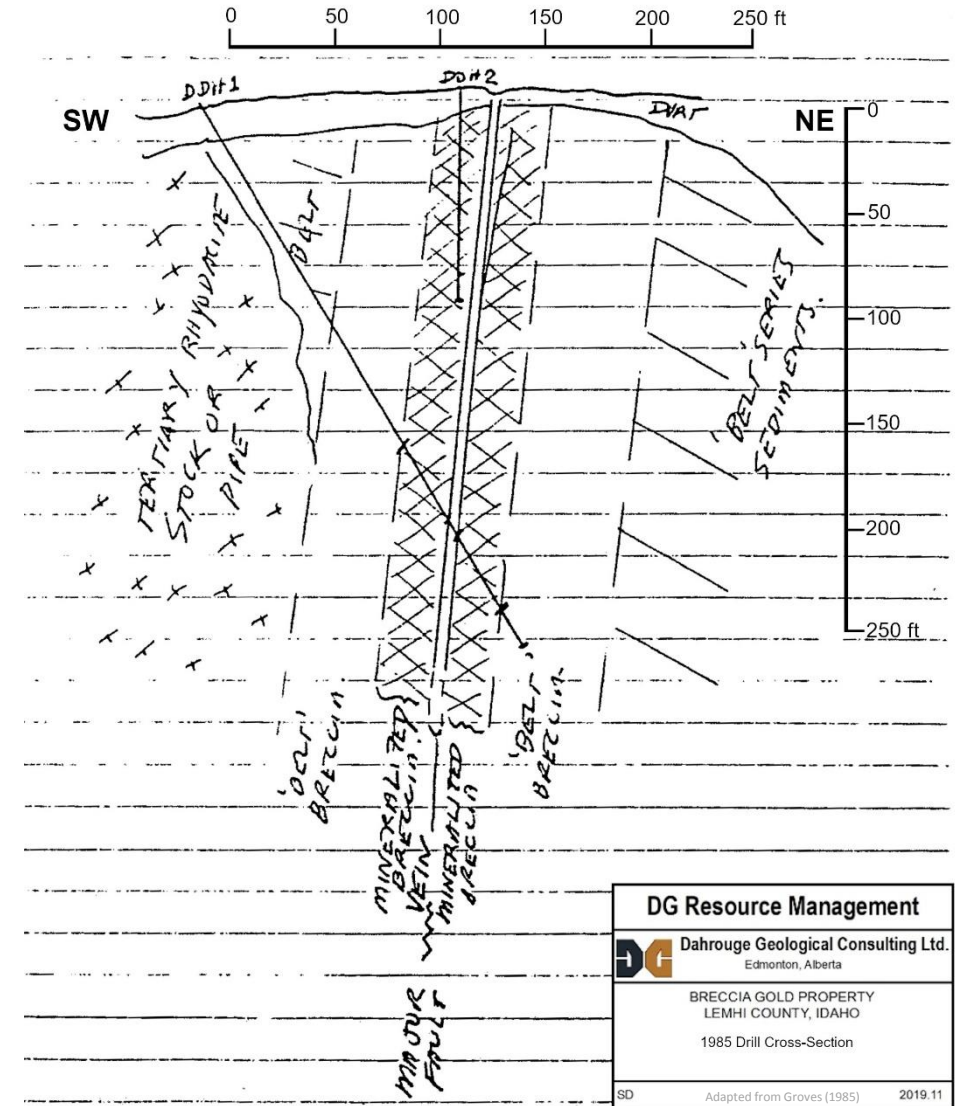
Location

- The Breccia Gold Property is located in mining friendly Idaho, approximately 40 km from Salmon and 12 km from Cobalt
- The property consists of 80 claims over an estimated 1650 acres, which were acquired in 2018 and 2019
- Property covers the historic Breccia Property (Gahsmith Gold Mine) and is adjacent to the south of the Historic Musgrove Mine
- Gold is hosted within highly oxidized breccias, proximal to the Meadows Fault Zone (MFZ)



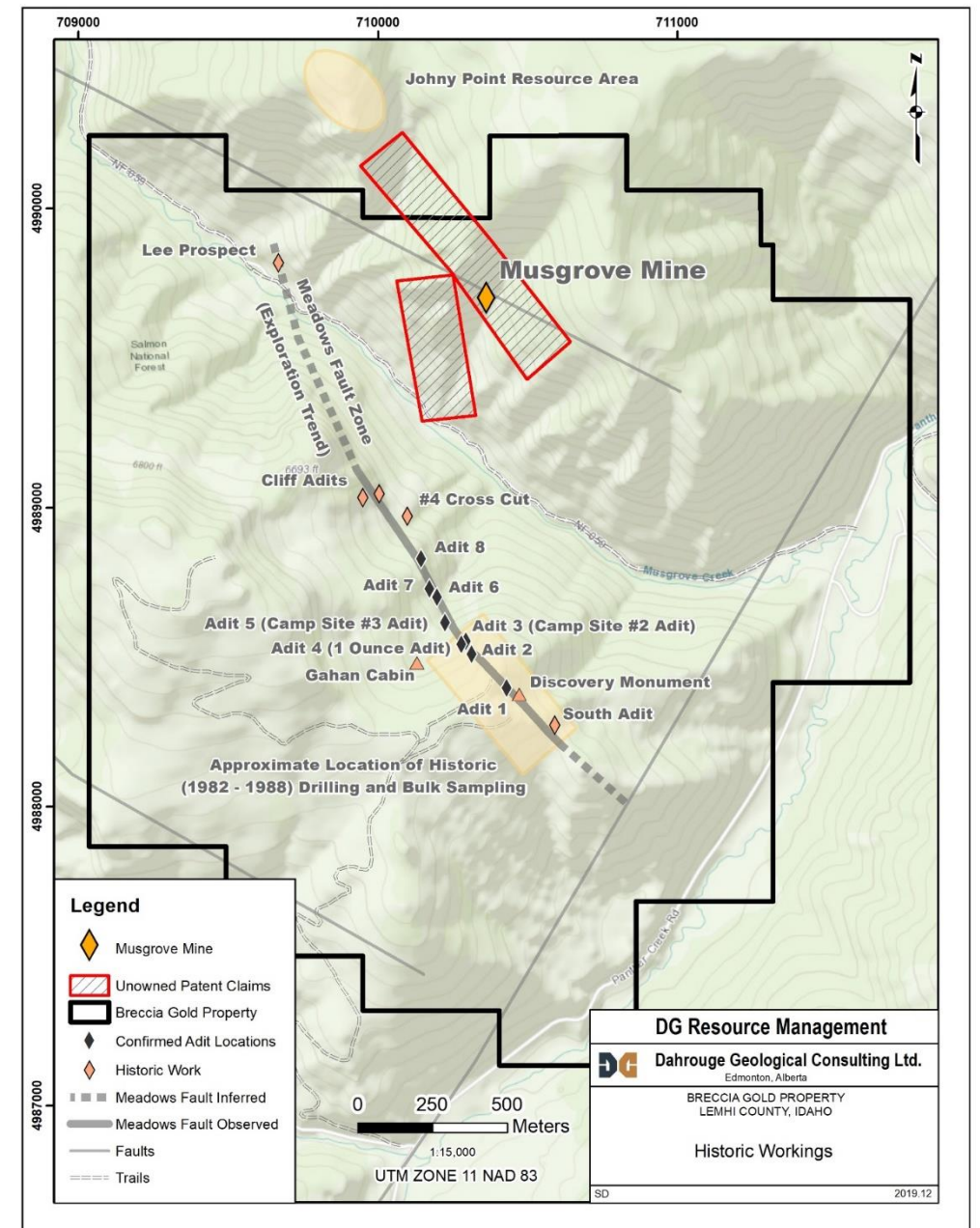
History

- Patented in 1913, the adjacent “Musgrove Mine” developed on high-grade gold veins
- Gold mining at Breccia (nee: Gahsmith) from 1930’s to 1940’s
- 1983 surface sampling by Metron showed an average of 0.144 oz/t Au
- 1985 two drill holes near South Adit provide results consistent with surface sampling (~ 0.144 oz/t), mineralized intercepts follow:
 - DDH 1: 200 to 300’
 - DDH 2: 0 to 100’
- 1985, Groves provides estimate of: 5×10^6 tons at an average of 0.138 to 0.140 oz/t Au **(690 to 700,000 oz Au)**



Mineralization

- Adjacent historic resource at Johny's Point of 8 million tonnes at 1.22 g/t Au (0.036oz/ton) (Hatch, 2008)
- Gold mineralization is within an approximate 8 to 20 m wide zone, over 500 m+ in length, of highly brecciated and oxidized host lithologies
- At least eight historic adits developed along the length of the mineralized zone
- A 1987 bulk sample of 4,621 tons of gold bearing material was collected from a bulldozer cut along 200 feet of the zone. The bulk sample was determined at 0.335 oz/t Au.
- Proximal to the zone are a number of high grade (up to 30 g/t Au) quartz veins



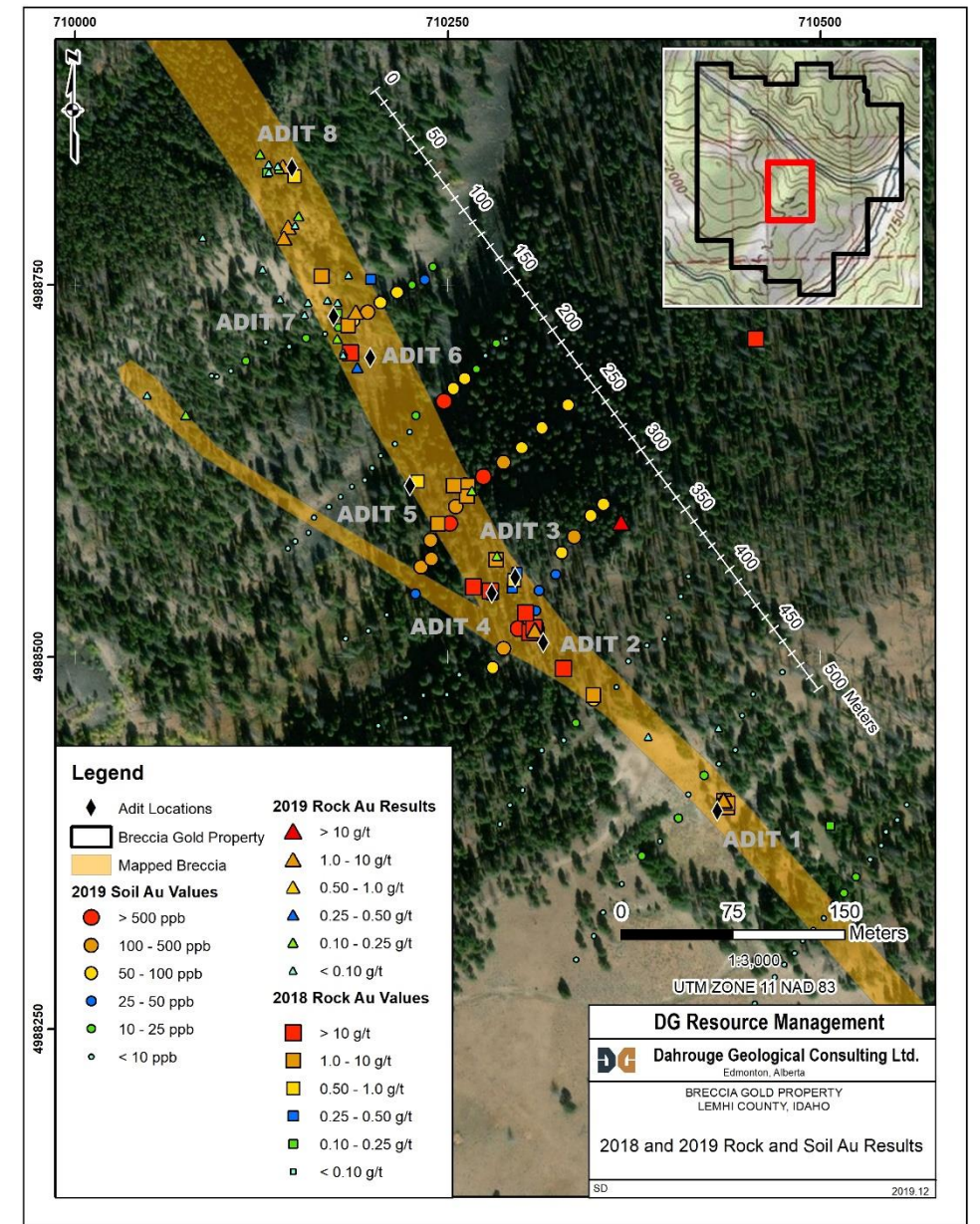
2018 Exploration

- Average grade of 59 samples from the property was 4.79 g/t Au
- Outcrop samples returned up to **84.3 g/t Au**
- 24 samples returned grades >1 g/t Au, 16 of which were in-situ
- A total of 29 samples from the Breccia Zone (BZ) averaged 8.40 g/t Au
- Eight historic adits located and sampled



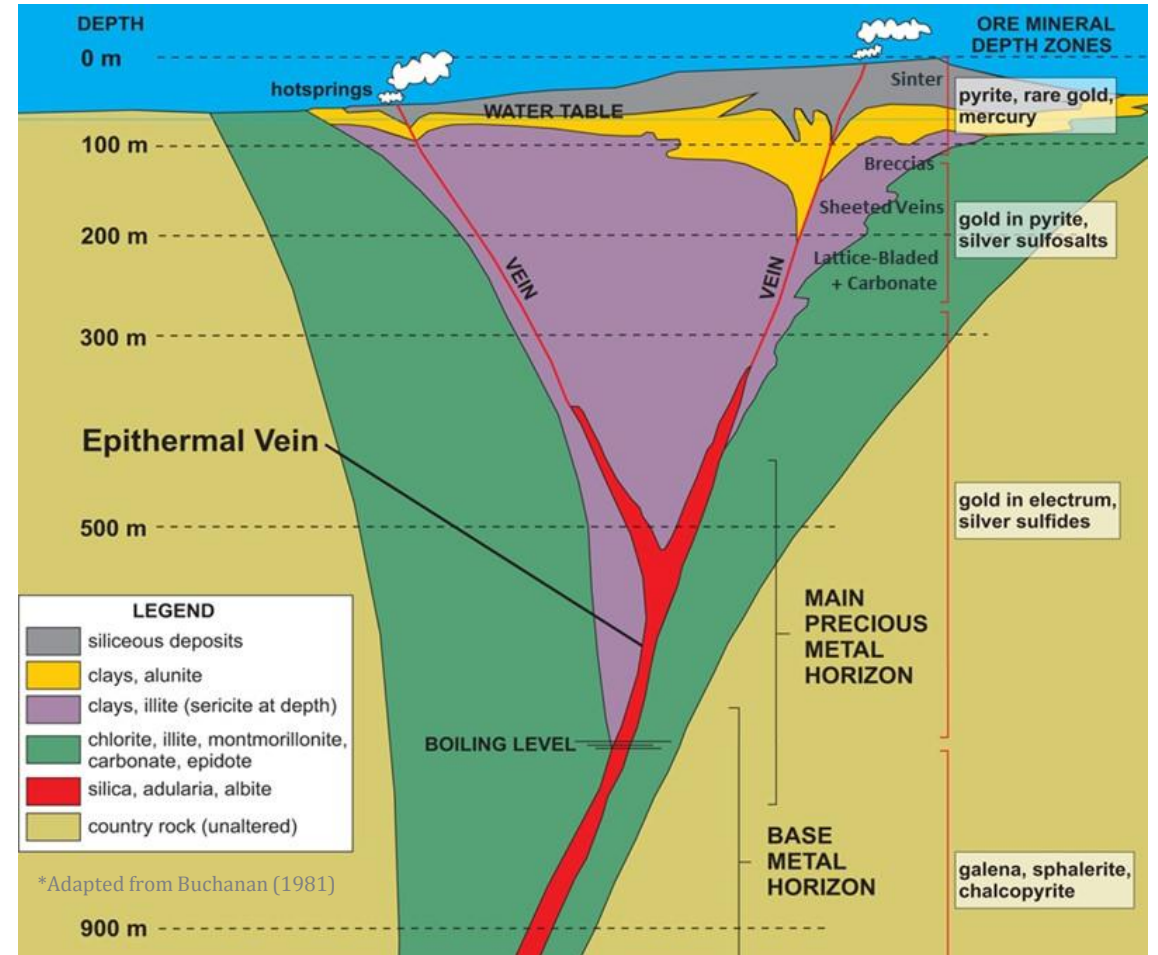
2019 Exploration

- A total of 74 chip and grab rock samples collected in 2019 averaged 4.37 g/t Au
- Three chip/channel sections at two historic adits produced an average grade of 6.80 g/t Au and 6.57 g/t Ag over 11.5 m
- Mineralized zone 500 m+ along strike and up to 15 m wide in areas. The vertical sampled component exceeded 130 meters
- Lee Prospect to the north extends BFZ to 1,800 m
- Anomalous Au in soil samples open along 500 m+ strike / 100m+ width
- **In total the 52 samples collected in 2019 from the BZ averaged 4.44 g/t Au and 4.83 g/t Ag**



Low-Sulphidation Deposit Type

- Low Sulphidation Hot Spring Type Epithermal Deposit
- Characterized by large tonnage, typically lower grade, structurally controlled deposits
- Typical for multiple episodes of brecciation, hydrothermal activity and deposition
- Often **higher grade root zones present at depth**
- Notable Examples:
 - Grassy Mountain, Oregon – M+I Reserves of 1.06 million oz Au @ 1.17 g/t
 - Round Mountain Mine, Nevada – 10 million oz Au @ 1.2 g/t
 - Mclaughin Mine, California – 4 million oz Au @ 3.42 g/t



DC Resource Management

Suite 103, 10183 – 112 Street
Edmonton, AB T5K 1M1
Tel: 780-434-9808

www.dgrm.co

Jody Dahrouge
Email: jody@dahrouge.com

